

# Find the right doctor — *fast*

## DocFind® Online Directory

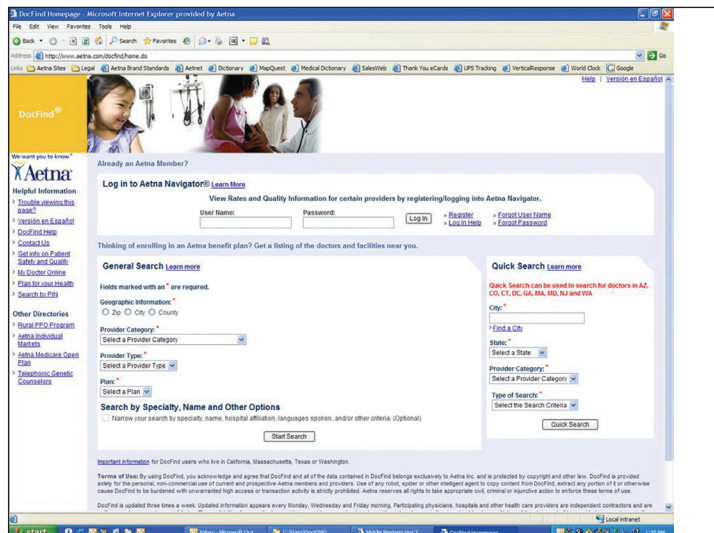
With our DocFind® online directory, you can look for a health care professional or facility by specialty and location — anytime, day or night. It makes it that much easier to get the information you need to manage your health.

Looking for a dentist or a pediatrician near home? How about a surgeon who works with a nearby hospital? All the information there — plus maps and directions to the doctor's office. You can even look for doctors who speak your language.

**Check out DocFind on our website at [www.aetna.com](http://www.aetna.com). The simple steps listed below will help guide you through your search.**

### STEP 1:

Start your search at [www.aetna.com](http://www.aetna.com). Below the Shortcuts column on the right select **FIND A DOCTOR** and **I ACCEPT**. First-time Aetna<sup>+</sup> members can register with either their Aetna Member ID or Social Security number or conduct a general search. To reach DocFind if you are already enrolled in an Aetna plan, simply log in to Aetna Navigator.



Search for health care professionals and facilities online, whenever you need to. It's as easy as 1-2-3-click.

### STEP 2:

Complete all the category selections.

- Decide how you'd like to search for a provider — by zip code, city or county, or use **Quick Search** if you already have a provider's name.
- Next, select your personal search parameters:
  - > Provider category includes doctors, dentists, hospitals, etc.
  - > Provider type includes specialist and primary care providers.
  - > The Aetna plan that you enrolled in. (See the instructions below on how to find your plan.)
  - > Click the **Additional Search Criteria** for an enhanced search that includes criteria such as gender and language spoken.

### STEP 3:

Click the **Start Search** for a listing of all the providers in the geographical area you selected.

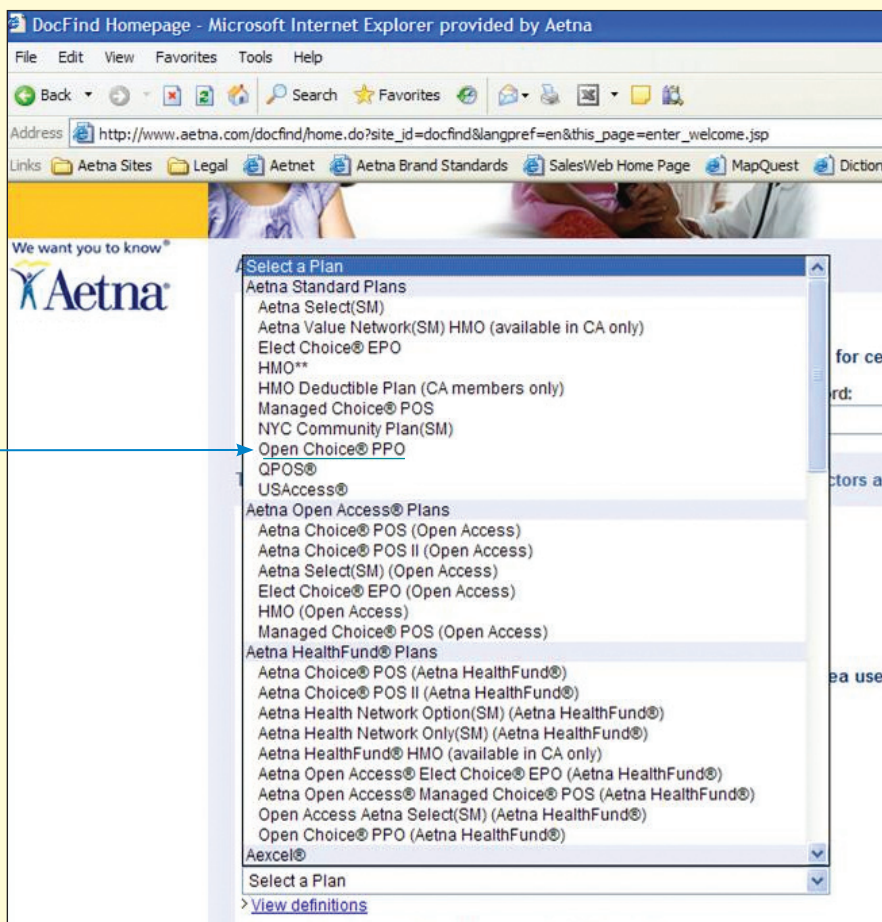
*Continued on back page ...*

Health insurance, dental insurance, life and disability insurance plans/policies are offered by Aetna Life Insurance Company (Aetna).

## How to find your Washington plan

Some of the names for our Washington plan appear differently in DocFind. This screen shot is a quick reference guide to identify your plan.

PPO ●



## Need a paper directory?

If you're an Aetna member and don't have computer or Internet access, no problem. Just call the toll-free Member Services number on your Aetna ID card. If you're not yet a member, call 1-888-87-AETNA (1-888-872-3862).

## ¿Necesita DocFind en español?

¡No hay problema! Simplemente haga clic en el botón "Versión en español" en la parte superior de la página principal de DocFind para cambiar a la versión en español.

If you need this material translated into another language, please call Member Services at 1-888-98-AETNA (1-888-982-3862).

Plan features and availability may vary by location and are subject to change. Providers are independent contractors and are not agents of Aetna. Provider participation may change without notice. Aetna does not provide care or guarantee access to health services. Health benefits and health insurance plans contain exclusions and limitations. If you are in a plan that requires the selection of a primary care physician and your primary care physician is part of an integrated delivery system or physician group, your primary care physician will generally refer you to specialists and hospitals that are affiliated with the delivery system or physician group. Information is believed to be accurate as of the production date; however, it is subject to change. For more information about Aetna plans, refer to [www.aetna.com](http://www.aetna.com).

Get the information  
you need, when you  
need it. DocFind,  
your 24/7, easy-  
access solution.



[www.aetna.com](http://www.aetna.com)

©2008 Aetna Inc.